



# NUMCOM-PO300

GSM-R station post

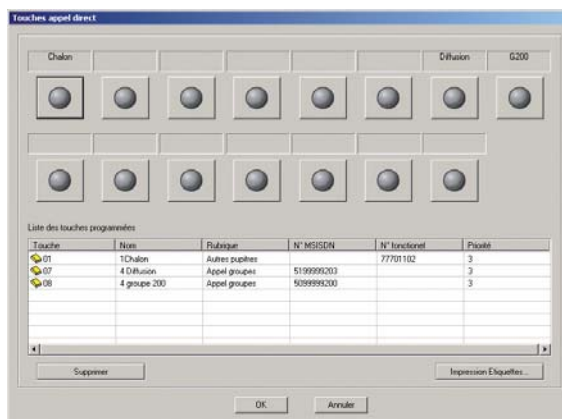
## Features

The NUMCOM-PO300 is conform to EIRENE specifications, it allows making main functions here below:

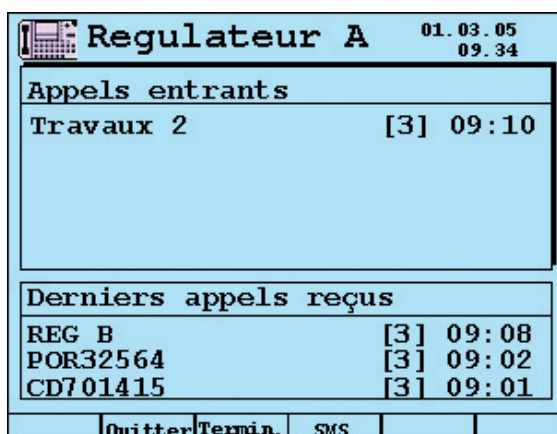
- Receive and send call by MSISDN or functional dialing
  - Emergency call
  - Individual call
  - Group call (VGC)
  - Broadcasting call (VBS)
- Direct call by train number dialing
- Direct call by dynamic list consultation (trains, locomotives and mobile phones)
- Keep on hold
- Conference
- Call forwarding (ECT) (if function compatible with network)

## Technical characteristics

- Dimension in mm without microphone: (W x H x D) 3420x120x330
- Power supply: DC 19 to 72 V, AC 100 to 230 V, 50/60 Hz
- Internal battery: 12V, 2,2 AH
- Autonomy: in stand by mode 4h, in conversation 1h
- Audio connection to external radio module:
  - 2 wires symmetric output: 100  $\Omega$  0,5 Vrms
  - 2 wires symmetric input: 600  $\Omega$  0,5 Vrms
  - Isolating voltage: 500 Vrms
- Data connection to external radio module:
  - Type: 4 wires RS422
  - Maximum length: 50 m
  - Bite rate: 9600 Bds (8 bits, without parity, 1 stop)
- Viewing angle of LCD screen: 80°



Direct call key configuration



Example of NUMCOM-PO300 screen



SIEMA Applications  
 35, rue Alfred Brinon  
 69100 VILLEURBANNE  
 FRANCE  
 Tél : +33 (0)4 78 85 14 14  
 Fax : +33 (0)4 78 68 98 44  
 siema@siema.fr

## EN BREF

- Direct connection to GSM-R network by a radio module
- Easy to install and to use
- Setting parameters by friendly software
- Conform to all EIRENE specification